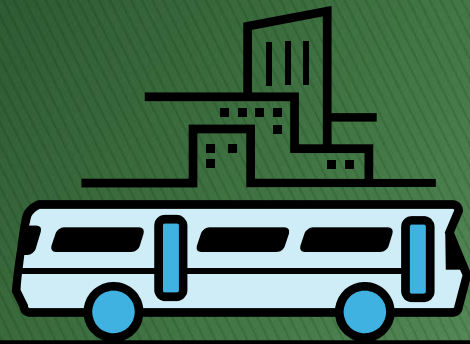


The North Front Range MPO Riders Guide was created in collaboration with the Larimer and Weld Mobility Councils. The Councils represent transit and human service agencies working toward the goal of ensuring that people who need transportation have access to the service they need for self-sufficiency and to live independently.

The information in this guide is intended to provide an overview of available public transportation services in the north front range area. For additional details of the services listed in this guide, directly contact the provider using the listed phone numbers and website addresses. This guide also is online at www.nfrmpo.org



NFRMPO 419 Canyon Avenue, Suite 300
 NORTH FRONT RANGE METROPOLITAN PLANNING ORGANIZATION Fort Collins, CO 80521
 970-221-6243
www.nfrmpo.org



North Front Range MPO Riders Guide

A transportation guide for the North Front Range Metropolitan Planning area.
 Effective August 2010

Fixed Route

Buses run along an established path at preset times picking up passengers at designated bus stops.

Provider	Website/Telephone	Hours of Service	Fares
Fort Collins/ TRANSFORT	fcgov.com/transfort 970-221-6620	Monday – Saturday 6:30 am – 6:30 pm	Single Ride\$1.25 Seniors, Disabled & Medicare.....\$.60 Youth.....FREE
<i>Additional Information</i> – Transfort has 19 routes operating within the City of Fort Collins and one (FLEX) that connects to Loveland, Berthoud and Longmont. See Transfort schedule for times, and additional fare information. Discounted passes are available at specific locations and by mail.			
Greeley–Evans (GET)	GreeleyEvansTransit.com 970-350-9287	Monday – Friday 5:45 am – 7:45 pm Saturday 6:00 am – 5:45 pm	Single Ride\$1.50 Seniors, Disabled & Medicare.....\$.75 Youth \$.75
<i>Additional Information</i> – GET has six routes that circulate within the Cities of Greeley and Evans. See GET schedule for times, and additional fare information. Day and discounted passes are available at specific locations in Greeley and Evans.			
Loveland (COLT)	www.cityofloveland.org (choose bus routes) 970-962-2700	Monday – Saturday 6:40 am – 6:40 pm	Single Ride\$1.25 Seniors, Disabled & Medicare.....\$.60 Youth \$.50
<i>Additional Information</i> – COLT has Green, Blue and Orange routes that circulate within the City of Loveland. It takes one hour to complete a full route. See COLT schedule for times, and additional fare information. Discounted passes are available at specific locations and by mail.			
<i>Transfort, GET and COLT each provide comprehensive route guides with detailed maps and rider information for individual fixed routes. For full details of their programs, contact them by phone or online with the websites addresses and phone numbers listed in this guide .</i>			

The North Front Range Metropolitan Planning Organization is an association of fifteen local governments working together to improve regional transportation and air quality. Local governments offering transportation options is one way to work on both. The North Front Range MPO Riders Guide is a resource for locating transportation services that offer alternatives to moving around the region by personal vehicle.



Demand Response/Modified Fixed Route				<i>Demand Response – Vehicles operating in response to calls from passengers. Modified Fixed Route – Fixed Route service with some flexibility in drop offs and pick ups of passengers.</i>			
Transit Provider	Website	Telephone	Hours of Service	Wheelchair Accessible	Fares	Service Area	Additional Information
Berthoud (BATS)	berthoud.org	970-532-3049	Monday – Friday 7:00 am – 5:00 pm	Yes	\$2.00 one-way trip*	Service for Berthoud residents to Berthoud, Loveland and Longmont	At least 24 hours notice to schedule a trip for the next day. *Dependent on destination & if rider is adult, senior or youth. Service not available most holidays.
Larimer County /Larimer Lift	www.co.larimer.co.us/larimerlift	970-498-7541	8:00 am – 5:30 pm M, W & F 8:00 am – 2:30 Tues.	Yes	\$1.00 one-way trip*	Service for rural Larimer county residents to specific county areas**	At least 48 hours notice to schedule a trip. *Seniors & attendants free. Not available most holidays. ** See service area map for further details.
Greeley-Evans (GET)	GreeleyEvansTransit.com	970-350-9290	M – Th. until 8:45 pm F & Sat until 9:45 pm*	Yes	\$3.00 one-way trip*	Throughout the cities of Greeley and Evans	Scheduled service available after normal hours for fixed route and paratransit service. Not available most holidays. *Limited Sunday service available – call for details.
Weld County	www.co.weld.co.us/Departments/Transportation	970-304-6403	Monday – Friday 6:00 am – 6:00 pm	Yes	N/C	Service for rural Weld County residents to Greeley and other areas*	Schedule two business days in advance. Priority given to medical appointment trips. * See Weld County transit guide for further details.
SAINT Senior Alternatives In Transportation	saintvolunteertransportation.org	970-223-8604	Monday – Friday 8:15 am – 4:00 pm	No	N/C	Within the city limits of Fort Collins and Loveland	Schedule three business days in advance. Service for seniors and people with disabilities. * Call SAINT for eligibility guidelines and further details.
Senior Resource Services (SRS)	seniorresourceservices.info	970-352-9348	Monday – Friday Office: 9:00 am – 4:00 pm	No	N/C	Service for Weld County senior citizens*	Schedule one week in advance. *Call SRS for eligibility guidelines, Weld County service area and further details of the program.
Paratransit				<i>Transportation service primarily intended for mobility-impaired and elderly persons. Operates in response to calls from passengers . Application must be submitted to determine eligibility for service.</i>			
Greeley (GET)	GreeleyEvansTransit.com	970-350-9290	5:45 am – 7:45 pm M – F 6:00 am – 5:45 pm Sat.	Yes	\$3.00 one-way trip*	Throughout the cities of Greeley and Evans	Visit website or call for paratransit application. Service not available most holidays. * Discounted single ride and monthly passes available.
Loveland (COLT)	www.cityofloveland.org (choose bus routes)	970-962-2700	6:38 am – 6:38 pm M – Sat	Yes	\$2.00 single ride*	City of Loveland	Visit website or call for paratransit application. Service not available most holidays. * Discounted single ride and monthly passes available.
Fort Collins/ Dial-A-Ride	fcgov.com/transfort (under rider services)	970-224-6066	6:00 am – 11:00 pm M – Sat.	Yes	\$2.50 one-way trip	Three quarter mile from any fixed bus route in City of Fort Collins	Service only for individuals with disabilities. Visit website or call for paratransit application. Service not available most holidays.
Commuter Shuttle				<i>Limited route structure connecting commuters to a limited number of origins and destinations.</i>			
FLEX	flexnoco.com	970-221-6620	Monday – Saturday See website for specific route times	Yes	\$1.25*	Connecting Fort Collins, Loveland, Berthoud and Longmont	Commuter service connecting the North Front Range to Denver RTD service. Check for holiday service. *Seniors, disabled & Medicare \$.60 cents/Youth – Free
Taxi Service				<i>Vehicle with driver available for hire to carry passengers between any two points for a fare determined by a meter or a flat rate.</i>			
Shamrock/ Yellow	rideshamrock.com	See Individual City Numbers	Fort Collins970-224-2222 Greeley970-686-5555 Loveland970-224-2222			Shamrock/Yellow cab offers 24 hour service within the North Front Range area and to destinations outside the area. Rate for service (as of 7/15/2010) is \$3.50 for pickup plus \$2.25 mile.	
SmartTrips – Vanpool & Carpool				<i>Ridesharing solutions including Carpool and Vanpool Services</i>			
NFRMPO	smarttrips.org	1-800-332-0950	Smarttrips helps commuters find carpool matches, vanpool matches and other commute options. Rates for carpool matches are variable. Vanpool programs are groups of six people with similar commutes to and from work. Rates vary depending on destination.				